

CORRECTIONS

Glycoconjugate J (1987) 4:339-348

In Fig. 1 (p 342) the two SDS gel lanes were omitted. The corrected figure is reproduced below.

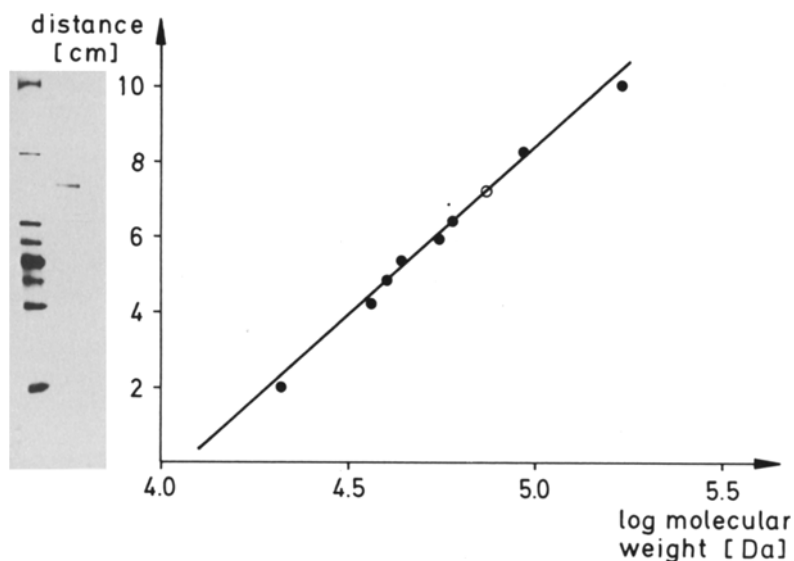


Figure 1. SDS gel electrophoresis of the purified sialidase from *T. rangeli*. The enzyme obtained after the procedure given in Table 1 was run on a gradient of 6-15% SDS and stained with Coomassie Brilliant Blue (lane 2). In lane 1 the following standards were run (from top to bottom): α_2 -macroglobulin (170 000), phosphorylase b (94 000), catalase (60 000), glutamine dehydrogenase (55 000), ovalbumin (43 000), rabbit muscle aldolase (40 000), lactate dehydrogenase (36 000) and trypsin inhibitor (21 000). The molecular weight of the sialidase can be estimated as 70 000 from the plot of migration distance versus log molecular weight of the standard proteins.

Further correction: p 344 line 11, the concentration of Neu5Ac2en was 1.4×10^{-4} M not 1.4×10^4 .